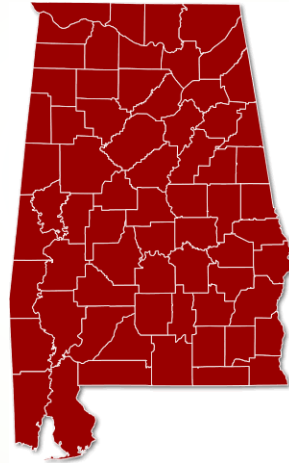


# Sumter County, Alabama

## Workforce Statistics



The University of Alabama Center for Economic Development  
The University of West Alabama, Division of Economic Development &  
Outreach

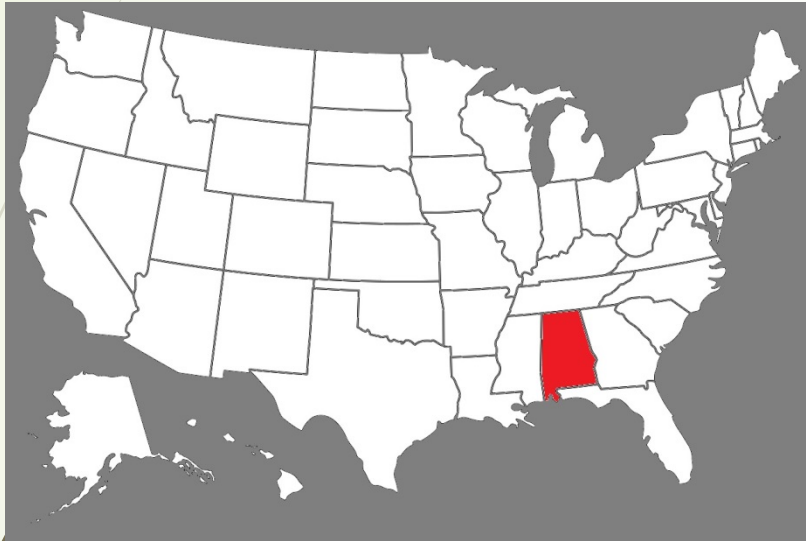
## Sumter County

- Sumter Co. Courthouse Square
- Alamuchee-Bellamy Covered Bridge
- Black Belt Museum
- Bored Well
- Coleman Center for the Arts
- Gainesville Historic District
- Gainesville Lakes
- Lake LU
- Myrtlewood Cemetery
- Sumter Welcome Center
- The University of West Alabama



Source: Tour Sumter County

# Where We Are



**Sumter County:** The county seat is Livingston. The county received its name in honor of General Thomas Sumter of South Carolina. The County has a total area of 913 square miles: 904 square miles are land and 9.4 square miles are water.



# Who We Are – Population

**Table 6. Sumter County Population**

	2000 Census	2010 Census	2015 Estimate	2010-2015 Change	2020 Projection	2010-2020 Change
Sumter County	14,798	13,763	13,103	-4.8%	12,588	-8.5%
Alabama	4,447,100	4,779,736	4,858,979	1.7%	4,940,438	3.4%
United States	281,424,600	308,745,538	318,857,056	3.3%	334,503,000	8.3%

Source: Center for Business and Economic Research, The University of Alabama and U.S. Census Bureau.

Age	Estimate
Under 5 years	681
5 to 14 years	1,465
15 to 19 years	1,239
20 to 24 years	1,622
25 to 34 years	1,428
35 to 44 years	1,274
45 to 54 years	1,557
55 to 64 years	1,863
65 years and older	2,156

- Approximately 30.2 % of Sumter County's population aged 55 and older are still in the workforce.

# Who We Are – Education

## Sumter County Education Enrollment and Attainment

School Enrollment	Estimate
Population 3 years and over enrolled in school	4,193
Nursery school, preschool	221
Kindergarten	305
Elementary school (grades 1-8)	1,116
High school (grades 9-12)	736
College or graduate school	1,815

Educational Attainment	Estimate
Population 25 years and over	8,278
Less than 9th grade	464
9th to 12th grade, no diploma	1,193
High school graduate (includes equivalency)	3,443
Some college, no degree	1,175
Associate's degree	503
Bachelor's degree	907
Graduate or professional degree	593

Source: U.S. Census Bureau, 2012-2016 5-Year American Community Survey  
Table DP02: Selected Social Characteristics in the United States

# Who We Are – Employment

## September 2017 Employment Data – Sumter County and Surrounding Counties

County	Civilian Labor Force	Employment	Unemployment	Unemployment Rate	Under-Employment	Available Labor Pool
Marengo	7,627	7,275	352	4.6%	1,152	1,504
<b>Sumter</b>	<b>5,032</b>	<b>4,796</b>	<b>236</b>	<b>4.7%</b>	<b>1,455</b>	<b>1,691</b>
Greene	2,852	2,688	164	5.8%	1,107	1,271
Pickens	8,270	7,956	314	3.8%	1,982	2,296
Choctaw	4,337	4,120	217	5.0%	993	1,210



# Who We Are – Employment

Table 2. Sumter County Employment and Wages (2nd Quarter 2015)

Industry by 2-digit NAICS Code	Total Employment	Share	Rank	Average Monthly Wage	Average Monthly New Hire Wages
11 Agriculture, Forestry, Fishing and Hunting	79	2.67%	9	\$2,605	\$2,313
21 Mining	n.a.	n.a.	n.a.	n.a.	n.a.
22 Utilities	16	0.54%	16	\$3,179	n.a.
23 Construction	58	1.96%	11	\$4,428	\$2,423
31-33 Manufacturing	293	9.91%	4	\$3,110	\$2,947
42 Wholesale Trade	78	2.64%	10	\$2,811	\$3,325
44-45 Retail Trade	314	10.62%	3	\$1,572	\$1,089
48-49 Transportation and Warehousing	113	3.82%	7	\$3,307	\$3,545
51 Information	n.a.	n.a.	n.a.	\$2,167	n.a.
52 Finance and Insurance	47	1.59%	12	\$3,469	\$1,701
53 Real Estate and Rental and Leasing	19	0.64%	15	\$3,314	n.a.
54 Professional, Scientific, and Technical Services	47	1.59%	12	\$3,723	\$1,857
55 Management of Companies and Enterprises	n.a.	n.a.	n.a.	\$3,103	n.a.
56 Administrative and Support and Waste Management and Remediation Services	109	3.69%	8	\$3,982	\$3,728
61 Educational Services	840	28.42%	1	\$3,806	\$1,616
62 Health Care and Social Assistance	330	11.16%	2	\$2,289	\$2,740
71 Arts, Entertainment, and Recreation	8	0.27%	17	\$614	\$685
72 Accommodation and Food Services	286	9.68%	6	\$887	\$846
81 Other Services (except Public Administration)	29	0.98%	14	\$2,365	\$2,074
92 Public Administration	290	9.81%	5	\$2,406	\$3,435
<b>ALL INDUSTRIES</b>	<b>2,992</b>	<b>100%</b>		<b>\$2,815</b>	<b>\$2,090</b>

Note: Employment and wage data include both full-time and part-time employees. Average monthly new hire earnings could include earnings for less than a full month of employment. n.a. - data not available.

Source: Alabama Department of Labor and U.S. Census Bureau.

# Who We Are – Local Business



## Business Summary

Sumter County, AL  
Sumter County, AL (01119)  
Geography: County

Prepared by Esri

by NAICS Codes	Businesses		Employees	
	Number	Percent	Number	Percent
Agriculture, Forestry, Fishing & Hunting	6	1.4%	36	0.8%
Mining	2	0.5%	11	0.2%
Utilities	3	0.7%	36	0.8%
Construction	18	4.3%	52	1.1%
Manufacturing	10	2.4%	398	8.5%
Wholesale Trade	10	2.4%	104	2.2%
Retail Trade	59	14.0%	540	11.5%
Motor Vehicle & Parts Dealers	5	1.2%	9	0.2%
Furniture & Home Furnishings Stores	1	0.2%	130	2.8%
Electronics & Appliance Stores	0	0.0%	0	0.0%
Bldg Material & Garden Equipment & Supplies Dealers	3	0.7%	6	0.1%
Food & Beverage Stores	17	4.0%	194	4.1%
Health & Personal Care Stores	3	0.7%	41	0.9%
Gasoline Stations	13	3.1%	69	1.5%
Clothing & Clothing Accessories Stores	2	0.5%	3	0.1%
Sport Goods, Hobby, Book, & Music Stores	0	0.0%	0	0.0%
General Merchandise Stores	6	1.4%	64	1.4%
Miscellaneous Store Retailers	7	1.7%	16	0.3%
Nonstore Retailers	2	0.5%	8	0.2%
Transportation & Warehousing	22	5.2%	160	3.4%
Information	12	2.9%	56	1.2%
Finance & Insurance	22	5.2%	97	2.1%
Central Bank/Credit Intermediation & Related Activities	11	2.6%	70	1.5%
Securities, Commodity Contracts & Other Financial	1	0.2%	4	0.1%
Insurance Carriers & Related Activities; Funds, Trusts &	10	2.4%	23	0.5%
Real Estate, Rental & Leasing	24	5.7%	65	1.4%
Professional, Scientific & Tech Services	9	2.1%	34	0.7%
Legal Services	6	1.4%	16	0.3%
Management of Companies & Enterprises	0	0.0%	0	0.0%
Administrative & Support & Waste Management & Remediation	4	1.0%	75	1.6%
Educational Services	20	4.8%	1,314	28.1%
Health Care & Social Assistance	26	6.2%	467	10.0%
Arts, Entertainment & Recreation	3	0.7%	7	0.1%
Accommodation & Food Services	26	6.2%	260	5.6%
Accommodation	4	1.0%	28	0.6%
Food Services & Drinking Places	22	5.2%	232	5.0%
Other Services (except Public Administration)	74	17.6%	280	6.0%
Automotive Repair & Maintenance	8	1.9%	27	0.6%
Public Administration	66	15.7%	685	14.6%
Unclassified Establishments	5	1.2%	0	0.0%
<b>Total</b>	<b>421</b>	<b>100.0%</b>	<b>4,677</b>	<b>100.0%</b>

Source: Copyright 2017 Infogroup, Inc. All rights reserved. Esri Total Residential Population forecasts for 2017.

Date Note: Data on the Business Summary report is calculated using Esri's Data allocation method which uses census block groups to allocate business summary data to custom areas.



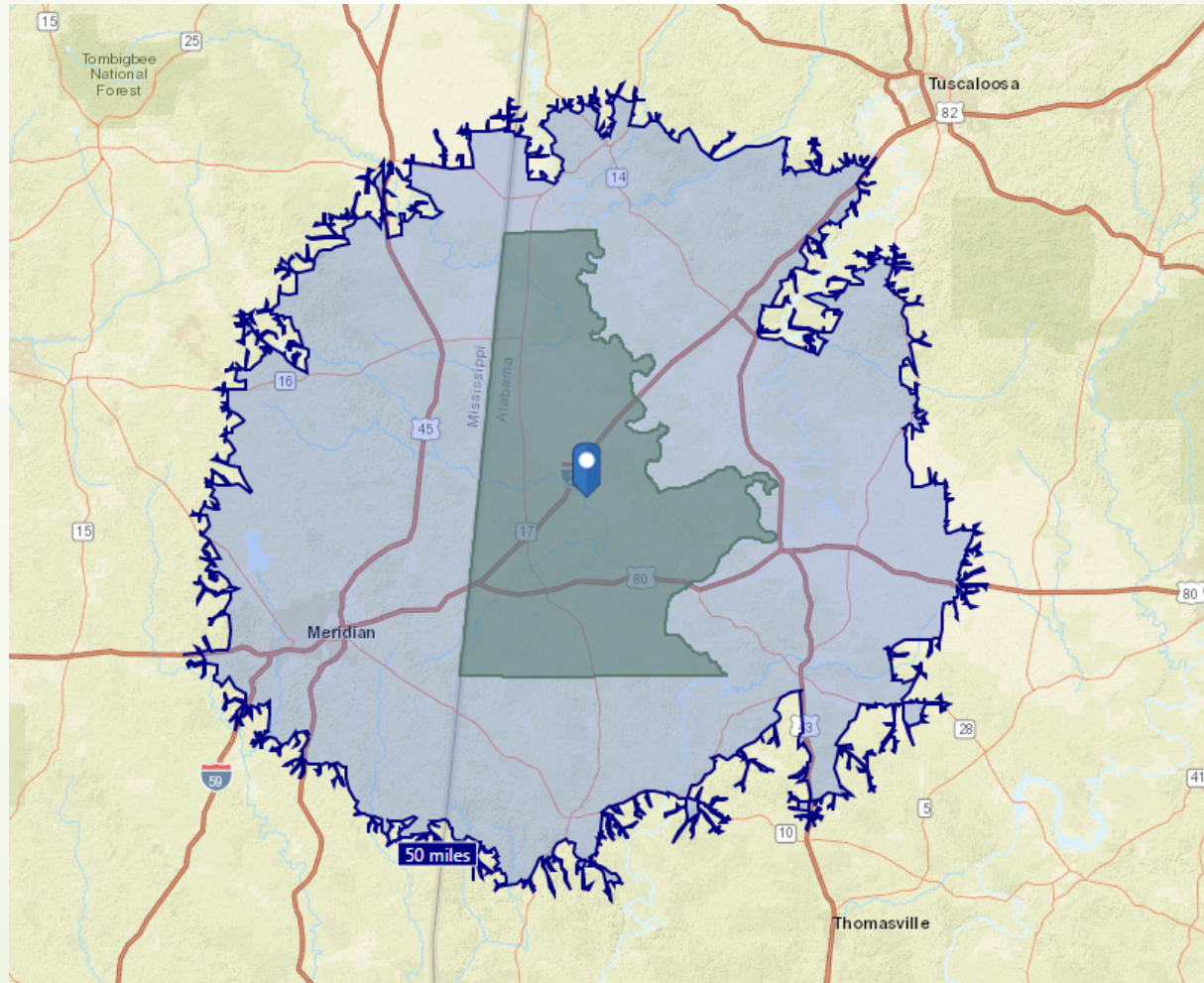
# Who We Are – Local Business

## Top Employers Sumter

- McElroy Truck Lines
- The University of West Alabama
- Sumter County School System
- Mannington Wood Floors
- Prystup Packaging Products
- Sumter Health & Rehab Center
- Chemical Waste Management
- Southwest Paper Sales

# Who We Are – Retail Development

## Sumter County



# Who We Are – Retail Development



esri

## Retail MarketPlace Profile

Sumter County, AL 4  
Sumter County, AL (01119)  
Geography: County

Prepared by Esri

### Summary Demographics

2017 Population	13,340
2017 Households	5,472
2017 Median Disposable Income	\$25,249
2017 Per Capita Income	\$17,937

### Industry Summary

	NAICS	Demand (Retail Potential)	Supply (Retail Sales)	Retail Gap	Leakage/Surplus Factor	Number of Businesses
Total Retail Trade and Food & Drink	44-45,722	\$126,092,686	\$96,991,813	\$29,100,873	13.0	82
Total Retail Trade	44-45	\$115,686,769	\$90,350,601	\$25,336,168	12.3	60
Total Food & Drink	722	\$10,405,917	\$6,641,212	\$3,764,705	22.1	22

### Industry Group

	NAICS	Demand (Retail Potential)	Supply (Retail Sales)	Retail Gap	Leakage/Surplus Factor	Number of Businesses
Motor Vehicle & Parts Dealers	441	\$27,530,665	\$1,215,419	\$26,315,246	91.5	5
Automobile Dealers	4411	\$21,705,540	\$516,887	\$21,188,653	95.3	1
Other Motor Vehicle Dealers	4412	\$3,424,748	\$0	\$3,424,748	100.0	0
Auto Parts, Accessories & Tire Stores	4413	\$2,400,377	\$698,532	\$1,701,845	54.9	4
Furniture & Home Furnishings Stores	442	\$3,467,617	\$17,494,035	-\$14,026,418	-66.9	1
Furniture Stores	4421	\$2,061,589	\$0	\$2,061,589	100.0	0
Home Furnishings Stores	4422	\$1,406,028	\$17,494,035	-\$16,088,007	-85.1	1
Electronics & Appliance Stores	443	\$2,972,598	\$0	\$2,972,598	100.0	0
Bldg Materials, Garden Equip. & Supply Stores	444	\$7,669,537	\$407,800	\$7,261,737	89.9	3
Bldg Material & Supplies Dealers	4441	\$7,134,190	\$180,956	\$6,953,234	95.1	2
Lawn & Garden Equip & Supply Stores	4442	\$535,347	\$226,844	\$308,503	40.5	1
Food & Beverage Stores	445	\$17,784,109	\$26,813,313	-\$9,029,204	-20.2	16
Grocery Stores	4451	\$16,471,299	\$26,643,209	-\$10,171,910	-23.6	15
Specialty Food Stores	4452	\$642,929	\$0	\$642,929	100.0	0
Beer, Wine & Liquor Stores	4453	\$669,881	\$170,104	\$499,777	59.5	1
Health & Personal Care Stores	446,4461	\$7,321,691	\$10,358,260	-\$3,036,569	-17.2	4
Gasoline Stations	447,4471	\$15,312,769	\$25,073,856	-\$9,761,087	-24.2	14
Clothing & Clothing Accessories Stores	448	\$3,383,017	\$222,979	\$3,160,038	87.6	2
Clothing Stores	4481	\$2,277,567	\$222,979	\$2,054,588	82.2	2
Shoe Stores	4482	\$520,728	\$0	\$520,728	100.0	0
Jewelry, Luggage & Leather Goods Stores	4483	\$584,722	\$0	\$584,722	100.0	0
Sporting Goods, Hobby, Book & Music Stores	451	\$3,349,008	\$0	\$3,349,008	100.0	0
Sporting Goods/Hobby/Musical Instr Stores	4511	\$2,918,326	\$0	\$2,918,326	100.0	0
Book, Periodical & Music Stores	4512	\$430,682	\$0	\$430,682	100.0	0
General Merchandise Stores	452	\$20,767,403	\$5,967,188	\$14,800,215	55.4	6
Department Stores Excluding Leased Depts.	4521	\$14,100,411	\$2,753,457	\$11,346,954	67.3	1
Other General Merchandise Stores	4529	\$6,666,992	\$3,213,731	\$3,453,261	34.9	5
Miscellaneous Store Retailers	453	\$5,214,147	\$1,089,486	\$4,124,661	65.4	7
Florists	4531	\$174,660	\$113,709	\$60,951	21.1	2
Office Supplies, Stationery & Gift Stores	4532	\$784,621	\$177,417	\$607,204	63.1	1
Used Merchandise Stores	4533	\$705,097	\$444,216	\$260,881	22.7	3
Other Miscellaneous Store Retailers	4539	\$3,549,769	\$354,144	\$3,195,625	81.9	1
Nonstore Retailers	454	\$914,208	\$1,708,265	-\$794,057	-30.3	2
Electronic Shopping & Mail-Order Houses	4541	\$253,239	\$0	\$253,239	100.0	0
Vending Machine Operators	4542	\$141,376	\$0	\$141,376	100.0	0
Direct Selling Establishments	4543	\$519,593	\$1,708,265	-\$1,188,672	-53.4	2
Food Services & Drinking Places	722	\$10,405,917	\$6,641,212	\$3,764,705	22.1	22
Special Food Services	7223	\$59,951	\$0	\$59,951	100.0	0
Drinking Places - Alcoholic Beverages	7224	\$197,313	\$137,801	\$59,512	17.8	2
Restaurants/Other Eating Places	7225	\$10,148,653	\$6,503,411	\$3,645,242	21.9	20

Data Note: Supply (retail sales) estimates sales to consumers by establishments. Sales to businesses are excluded. Demand (retail potential) estimates the expected amount spent by consumers at retail establishments. Supply and demand estimates are in current dollars. The Leakage/Surplus Factor presents a snapshot of retail opportunity. This is a measure of the relationship between supply and demand that ranges from +100 (total leakage) to -100 (total surplus). A positive value represents 'leakage' of retail opportunity outside the trade area. A negative value represents a surplus of retail sales, a market where customers are drawn in from outside the trade area. The Retail Gap represents the difference between Retail Potential and Retail Sales. Esri uses the North American Industry Classification System (NAICS) to classify businesses by their primary type of economic activity. Retail establishments are classified into 27 industry groups in the Retail Trade sector, as well as four industry groups within the Food Services & Drinking Establishments subsector. For more information on the Retail MarketPlace data, please click the link below to view the Methodology Statement.  
<http://www.esri.com/library/whitepapers/pdfs/esri-data-retail-marketplace.pdf>

# Who We Are – Retail Development



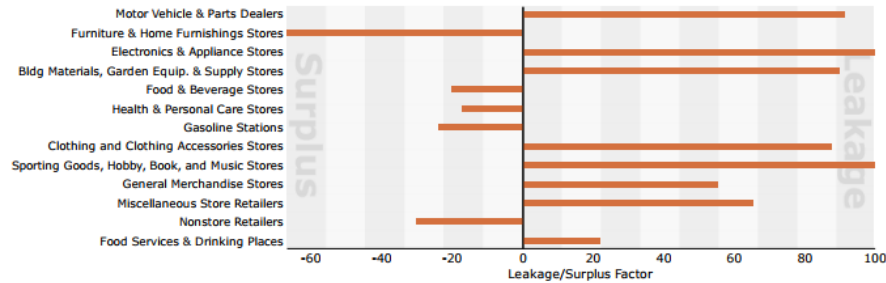
esri

## Retail MarketPlace Profile

Sumter County, AL 4  
Sumter County, AL (01119)  
Geography: County

Prepared by Esri

### Leakage/Surplus Factor by Industry Subsector

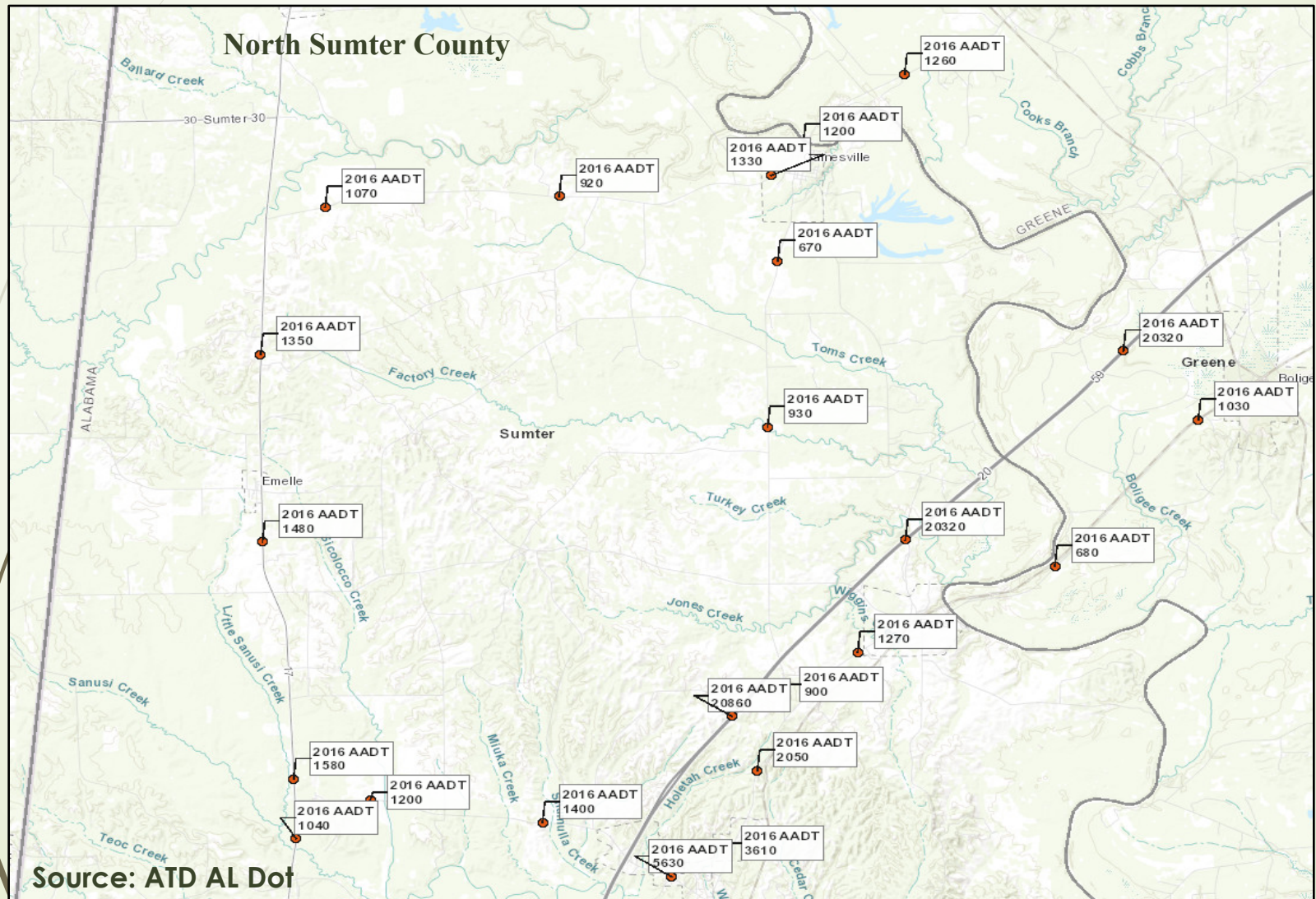


### Leakage/Surplus Factor by Industry Group



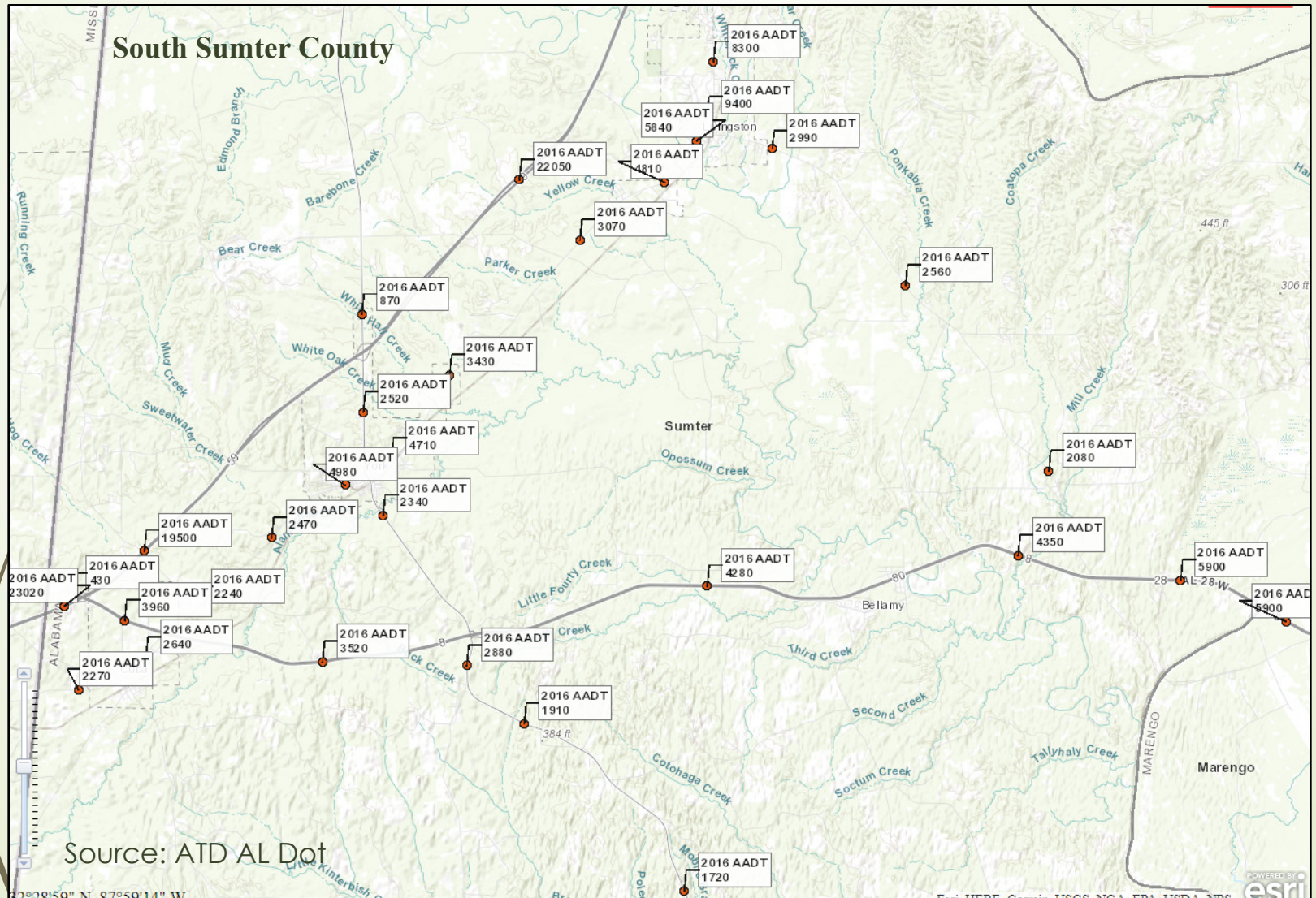


# Who We Are – Traffic Counts



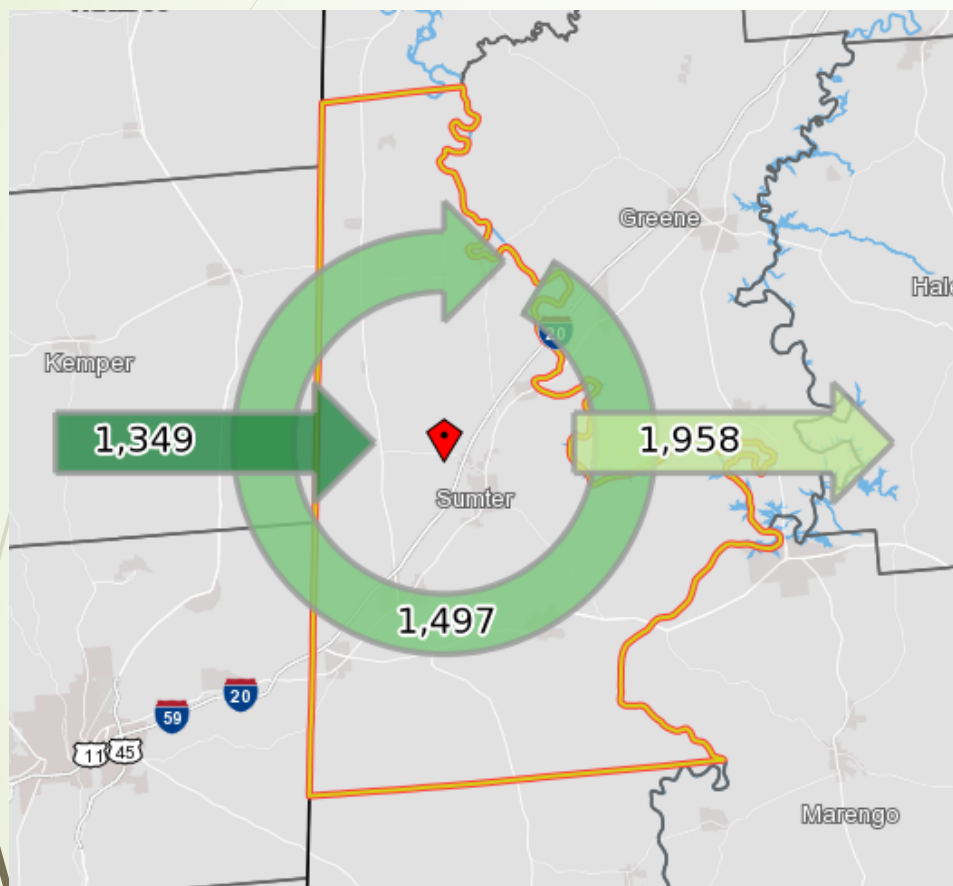


# Who We Are – Traffic Counts





# Who We Are – Commute



## Sumter County

### Inflow/Outflow Job Counts (Primary Jobs) 2015

	Count	Share
<a href="#">Employed in the Selection Area</a>	2,846	100.0%
<a href="#">Employed in the Selection Area but Living Outside</a>	1,349	47.4%
<a href="#">Employed and Living in the Selection Area</a>	1,497	52.6%
<a href="#">Living in the Selection Area</a>	3,455	100.0%
<a href="#">Living in the Selection Area but Employed Outside</a>	1,958	56.7%
<a href="#">Living and Employed in the Selection Area</a>	1,497	43.3%

Source: [onthemap.ces.census.gov](http://onthemap.ces.census.gov)

# Who We Are – Commute

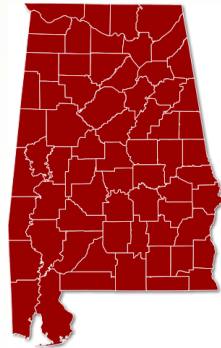
**Table 4. Sumter County Commuting Patterns**

Inflow, 2014		Outflow, 2014					
Number	Percent	Number	Percent				
1,646	100.0	2,618	100.0				
Average commute time (one-way)		Percent of workers					
		2010	2011	2012	2013	2014	2015
Less than 20 minutes		54.0	54.0	46.3	53.7	46.3	53.7
20 to 40 minutes		34.0	26.0	29.6	24.4	36.6	29.3
40 minutes to an hour		10.0	12.0	13.0	17.1	4.9	2.4
More than an hour		0.0	6.0	3.7	4.9	4.9	0.0
Average commute distance (one-way)		Percent of workers					
		2010	2011	2012	2013	2014	2015
Less than 10 miles		38.8	40.8	39.2	43.9	42.1	45.7
10 to 25 miles		32.7	32.7	29.4	26.8	34.2	42.9
25 to 45 miles		18.4	16.3	19.6	19.5	15.8	11.4
More than 45 miles		10.2	10.2	7.8	9.8	7.9	0.0

Note: Rounding errors may be present. Respondents that did not indicate their travel time are not included.  
Source: U.S. Census Bureau and Center for Business and Economic Research, The University of Alabama.

---

# Sumter County, Alabama



The University of West Alabama, Division of Economic Development & Outreach

**Dr. Tina Jones, Executive Director**  
**Allison Brantley, Director of Economic Development**  
**[www.uwa.edu](http://www.uwa.edu) • [abrantley@uwa.edu](mailto:abrantley@uwa.edu) • 205-652-3828**

---

# Sources

- Center for Business and Economic Research/Alabama Economy Online
  - <https://alabamaeconomyonline.ua.edu/profiles/sumter.html>
- ESRI Business Analyst
  - <https://bao.arcgis.com/esriBAO/>
- Economic Development Partnership of Alabama/Advantage Alabama
  - <http://advantagealabama.com/county/119/sumter/edpa-advantage-alabama-site-119.html>
- U.S. Census Bureau OnTheMap
  - <https://onthemap.ces.census.gov/>
- Sumter County School System
  - <http://www.sumter.k12.al.us/>
- Tour Sumter County
  - <http://www.toursumtercounty.com/>
- Sumter County Chamber of Commerce
  - <http://www.sumteralchamber.com/>